

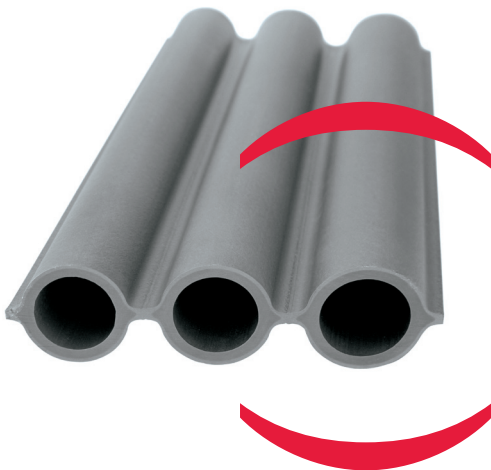
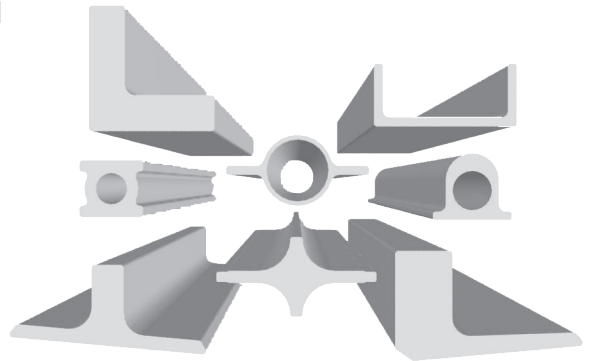
# ENERGY

## SPECIAL STEEL TUBES AND PROFILES FOR PLANT BUILDING AND POWER STATION ENGINEERING

WITH OUR PROFILE SOLUTIONS, WE ARE A COMPETENT PARTNER WHEN IT COMES TO THE DEVELOPMENT AND PRODUCTION OF SPECIAL COMPONENTS FOR LARGE INDUSTRIAL PLANTS OR POWER STATIONS FOR THE GENERATION OF POWER.

### + EFFICIENCY IN DESIGN

- Complex solid and hollowed shapes
- Heat and corrosion resistance
- Use of steel, alloys and nickel-based materials
- Composite solutions
- Seamless structure
- Heat exchange bundles with tubes not thermally altered (+)



### DIMENSIONAL CAPABILITIES

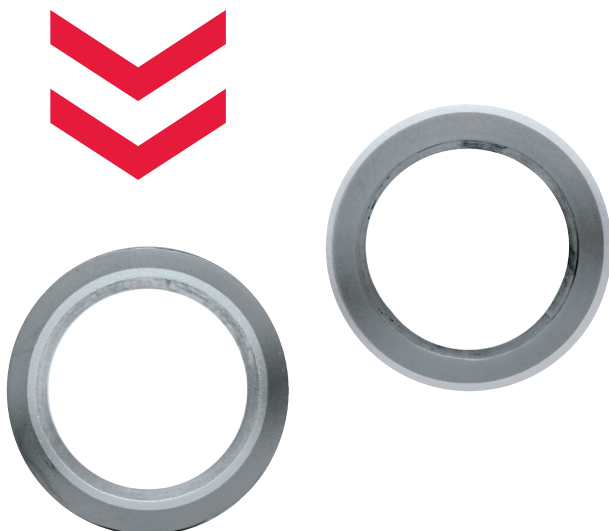
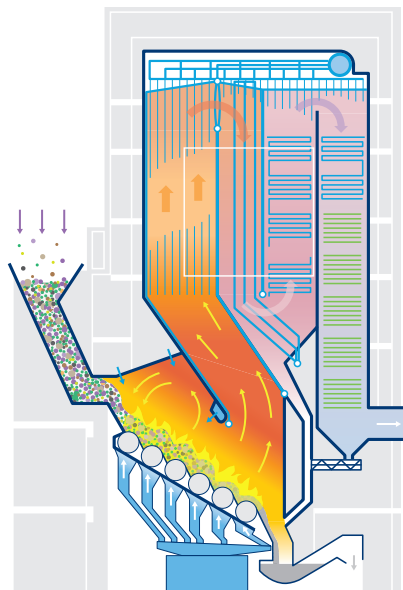
- **MATERIAL THICKNESS:** min 4 mm
- **SIZE RANGE:** fit in a circle of max  $\varnothing$  255 mm
- **INSIDE DIAMETER FOR HOLLOW PROFILES:** from 20 mm to 160 mm
- **WEIGHT PER METER:** from 1.5kg/m to 110 kg/m
- **LENGTH:** max. 16.800 mm, depending on profile cross section and weight per meter
- **TOLERANCES:** depending on profile cross section and material

## COMPOSITE SOLUTIONS

Use of composite tubes in waste incineration plants / biomass fired power plants.

## ADVANTAGES

- Wear resistance
- Heat conductivity and corrosion-resistance
- Minimal interface diffusion
- Smooth surface
- Durability and strength over time
- Simple processing



## PRODUCT RANGE

## APPLICATION FIELDS



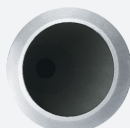
DOUBLE  
OMEGA TUBES



OMEGA  
TUBES



FIN TUBES



COMPOSITE  
TUBES

- ✓ Coal-fired power plants
- ✓ Waste incineration plants
- ✓ Biomass-fired power plants
- ✓ Chemical Plants
- ✓ Refineries

**HOT EXTRUDED**  
SPECIAL STEEL PROFILES



**ITA**  
siderval@siderval.it  
siderval.it



**GER**  
info@hoeschsep.com  
hoeschsep.com



**FR**  
commercial@cefival.fr  
cefival.fr